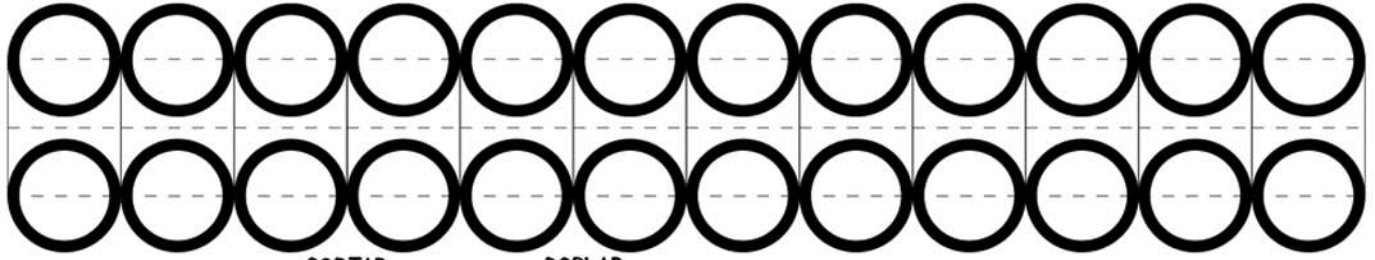
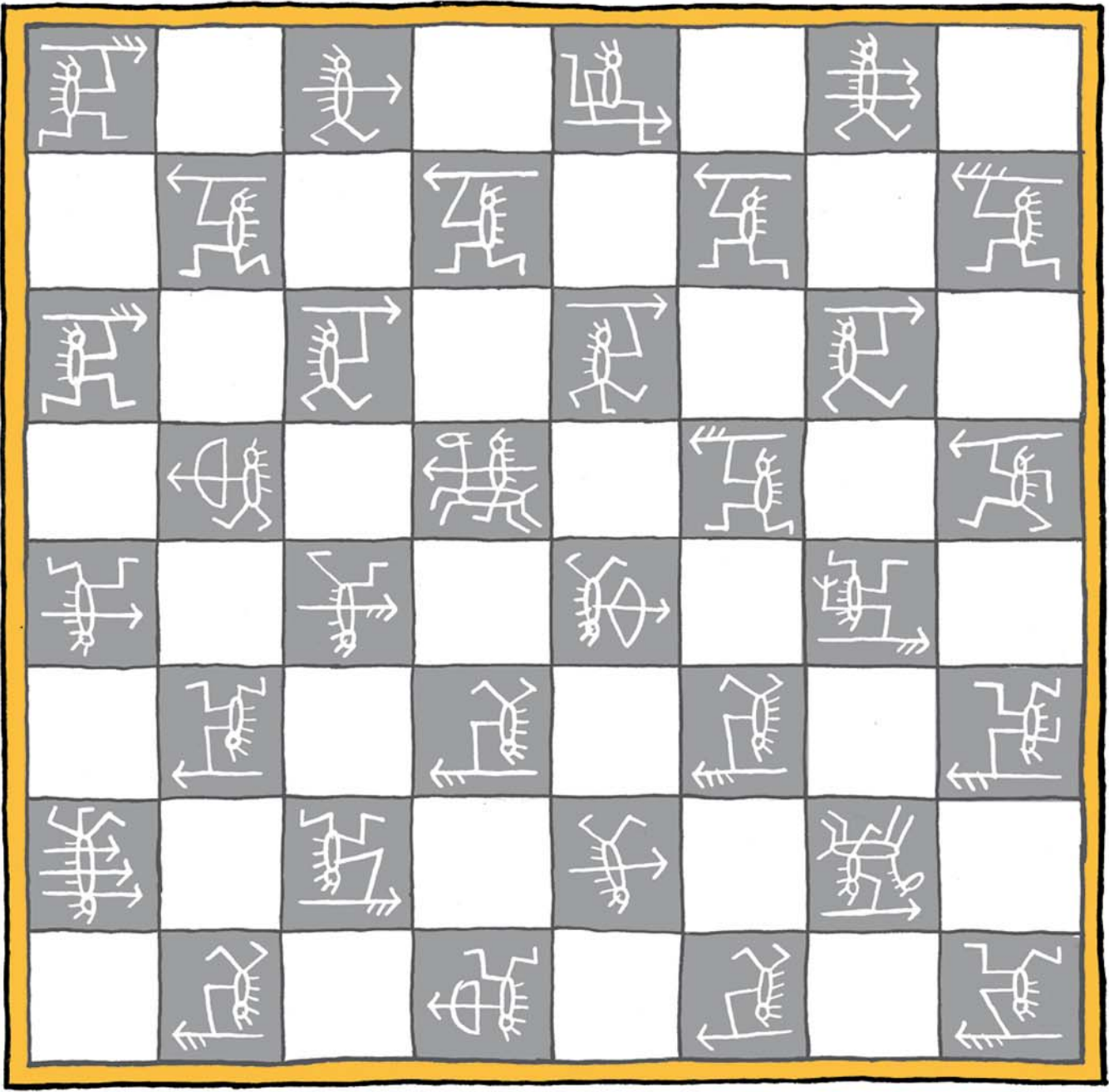


JUEGOS DE VERANO CUTTLAS

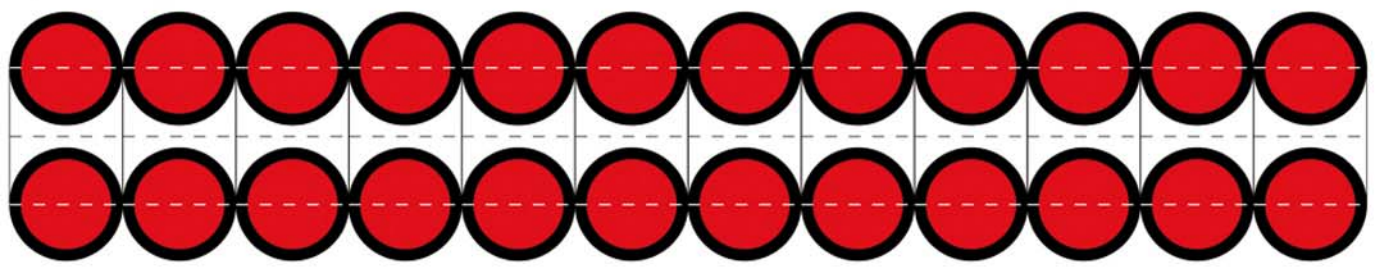
TABLERO DAMAS & AJEDREZ Y FICHAS DAMAS



CORTAR ----- DOBLAR



CALPURNIO



JUEGOS DE VERANO CUTTLAS

TABLERO BACKGAMMON (usa las fichas publicadas para las Damas)

20 minutos.es

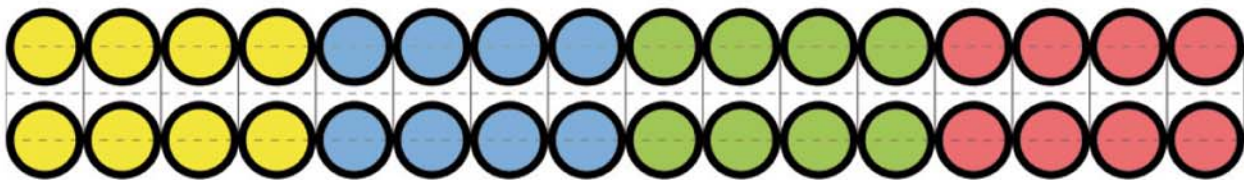


★ CUTTLAS ★

JUEGOS DE VERANO CUTTLAS

TABLERO Y FICHAS PARA PARCHÍS

CORTAR
DOBLAR



The board game grid consists of 10 columns and 10 rows. The central area is a large 'X' shape formed by four triangles meeting at the center. The top triangle is red, the right is green, the bottom is yellow, and the left is blue. The four corners of the board are also colored to match these triangles. The corners contain illustrations: top-left (red border) shows insects around a campfire; top-right (green border) shows space-themed elements like planets and rockets; bottom-left (blue border) shows insects; bottom-right (yellow border) shows insects. The grid cells are numbered 1 through 68. Some cells contain small grey circles representing tokens. The numbers are arranged as follows:

35	34	33	32	31	30	29	28	27	26
36	37	38	39	40	41	42	43	44	45
46	47	48	49	50	51	52	53	54	55
56	57	58	59	60	61	62	63	64	65
66	67	68	69	70	71	72	73	74	75
76	77	78	79	80	81	82	83	84	85
86	87	88	89	90	91	92	93	94	95
96	97	98	99	100	101	102	103	104	105

JUEGOS DE VERANO CUTILAS

RECORTAR --- DOBLAR

RECORTA



PEGA LA SOLAPITA



JUEGOS DE VERANO CUTTLAS

•EL BUENO•De•
★ CUTTLAS ★

TABLERO LA OCA

