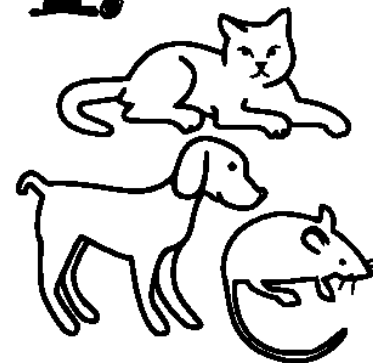


# DESCR

**1.- GRUPO AL Q**

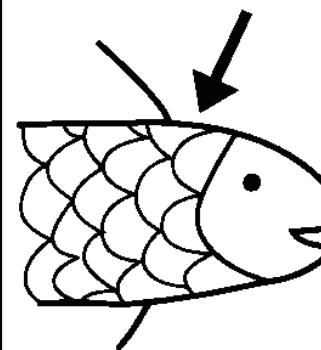
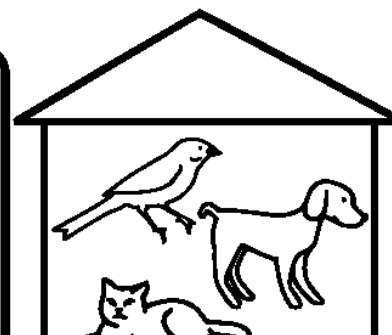


**MAMÍFEROS**



**ANFÍBIO**

**2.- ¿DÓNDE VIVE?**



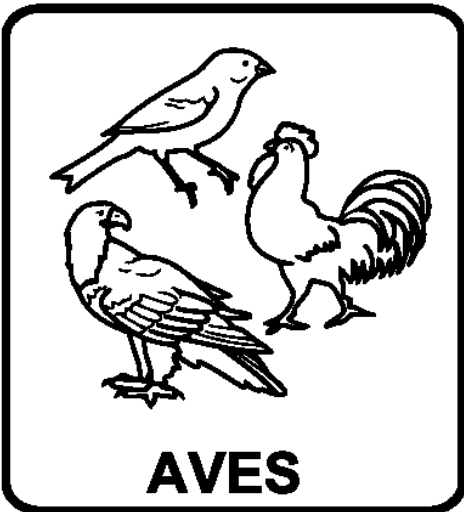
**3.- SU**

# BIBIMOS ANIMALES

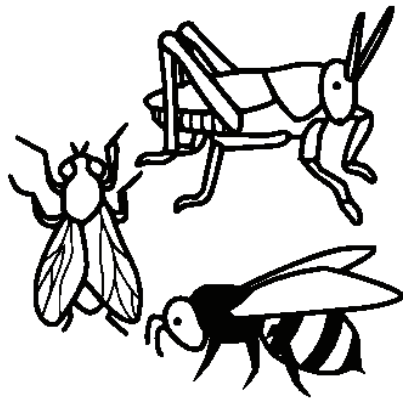
QUE PERTENECE



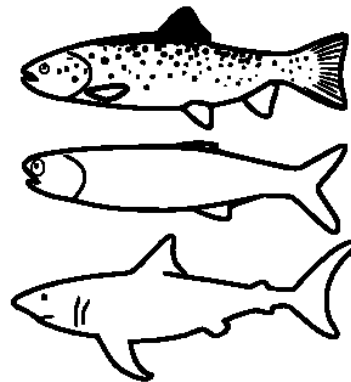
DS



AVES



INSECTOS

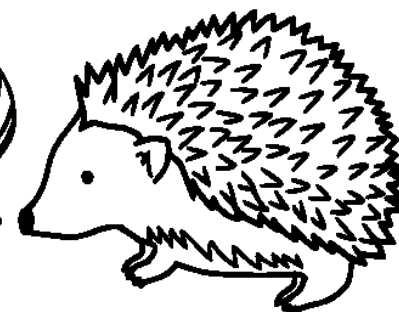
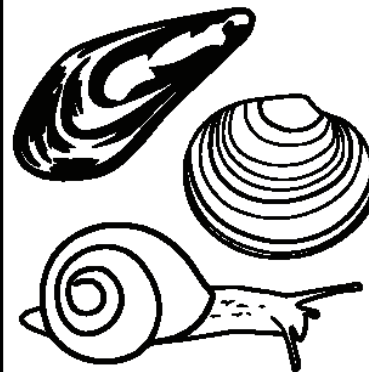
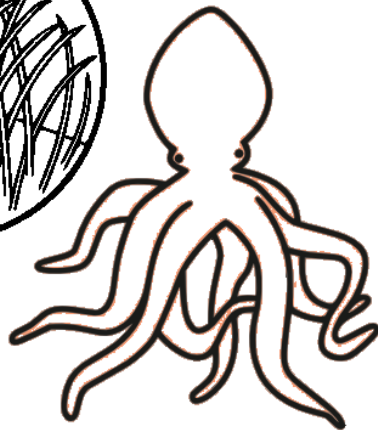


PECES



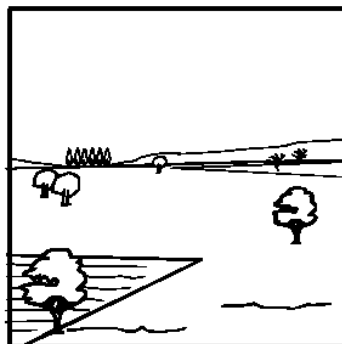
REPTILES

PIEL:





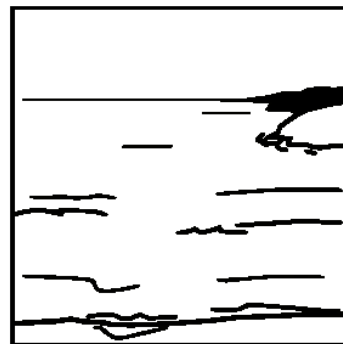
**GRANJA**



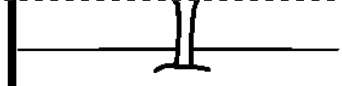
**CAMPO**



**BAJO TIERRA**



**AGUA**



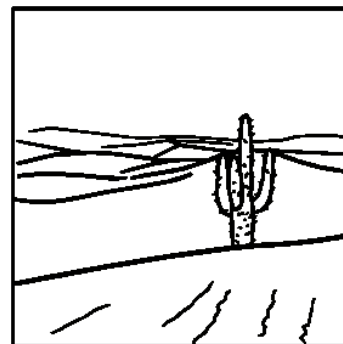
**ÁRBOLES**



**SELVA**



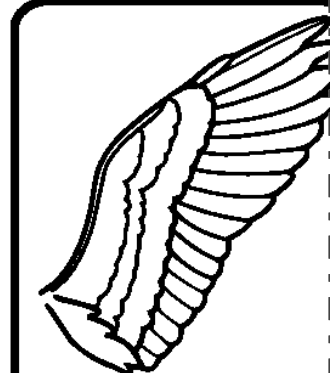
**DOMÉSTICOS**



**DESIERTO**

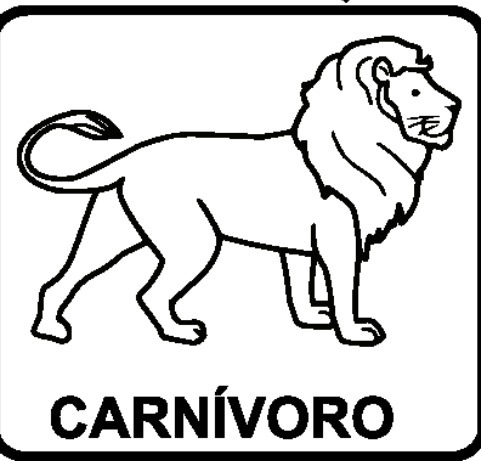
**ESCAMAS**

**4.- CAFÉ**

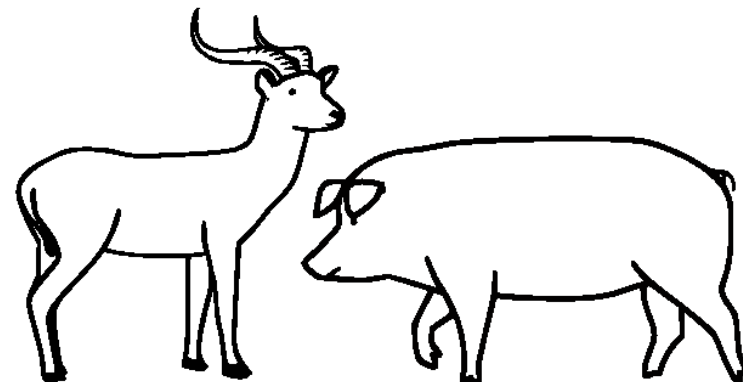


**ALAS**

**5.- ALIMENTACIÓN**



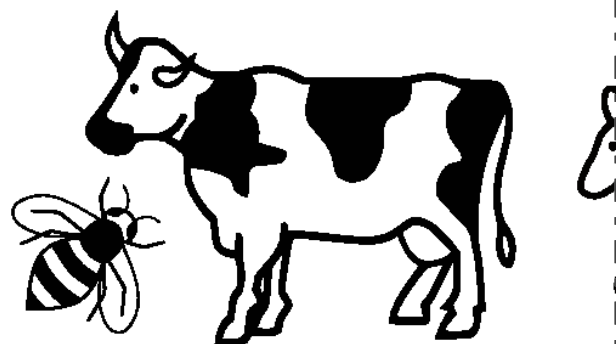
**CARNÍVORO**



**HERBÍVORO OMNIVORO**

También si comen fruta, insectos, semillas,...

**6.- DESTACA P...**



**NOS PROPORCIONA COMIDA**

PELO

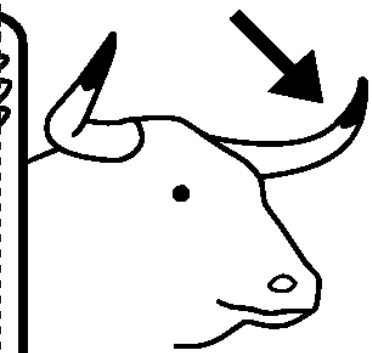
DESNUDA

PLUMAS

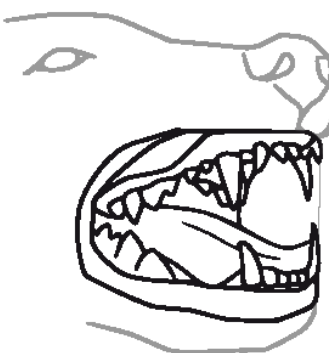
CONCHAS

ESPINAS

**CARACTERÍSTICAS: Grandes, largos, curvos, fuertes...**



**CUERNOS**



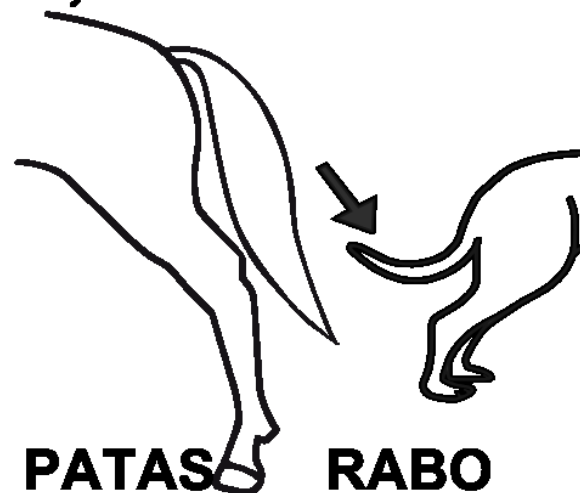
**FAUCES**



**TIPO DE PICO**



**GARRAS**



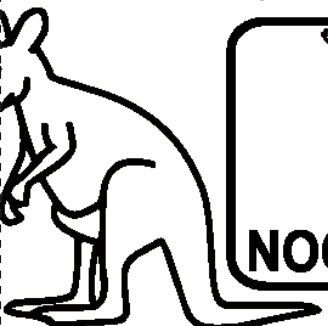
**PATAS**

**RABO**

**OTROS...**



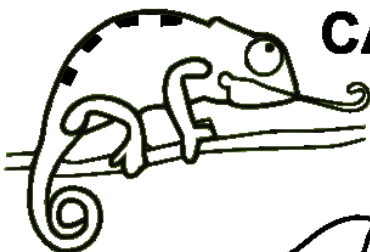
**ES RÁPIDO**



**SALTA**



**NOCTURNO**



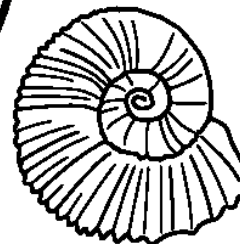
**CAMBIA DE COLOR**



**MAMÍFERO Y PONE HUEVOS**



**EXTINGUIDO**



**FÓSIL**



**FANTÁSTICO**